

## ON-PREMISES PRODUCT OVERVIEW

Hardmount Washer-Extractors  
Softmount Washer-Extractors  
Tumble Dryers  
Stack Tumble Dryers  
Heat Pump Tumble Dryers  
Front Load Washers

Top Load Washers  
Single Dryers  
Stack Dryers  
Stack Washer/Dryers  
6 kg Washer/Dryers  
Flatwork Finishers

**Speed Queen®**



# BUILT FOR RELIABLE PERFORMANCE.

100 years. It's a long time for any company to be at the forefront of an industry. And you'd think that a company that's been able to lead for that long must have a finely honed craft — a premier product. Well, you'd be right. For more than a century, Speed Queen has built a legacy on providing equipment that stands up to any commercial laundry challenge. We make no compromises in performance. We refuse to be outdone in reliability and efficiency. Our commitment to quality is only matched by our commitment to your success. The result? The most profitable machines in the industry — bar none.



Some of our competitors may think that a residential machine wrapped in a rugged exterior passes for commercial grade. We believe that strength comes from within. Speed Queen machines are built specifically for the commercial environment. We use metal where others use plastic. Our world-class Test Lab rigorously pushes our products far beyond the conditions they'll face in the field. We believe in being there when our customers need us most. And we work hard at every point of our manufacturing process to ensure that our machines reflect that belief.

# LAUNDRY. IT'S ALL WE DO.

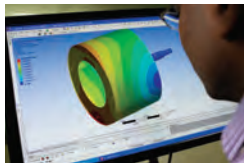
As the world's largest commercial laundry company, we help you achieve profitability with more laundry services than anyone else in the industry.

## LAUNDRY DESIGN

From selecting the right location to choosing a layout and everything in between.

## DISTRIBUTORS

True laundry experts, our knowledgeable distributors offer guidance, service and support.



## CUSTOMER ONE

We're committed to delighting our customers at every point of interaction.

## GENUINE PARTS

Same design. Same reliability. The perfect maintenance solution.

# DEDICATED TO



## HOSPITALITY

Hotels processing larger terry items and high-quality bedding require greater flexibility and capacity. Speed Queen's high-efficiency laundry systems are designed to meet those challenges, providing the highest productivity, lowest operating costs and perfect results.

## FIRE DEPARTMENTS

NFPA 1851 standards for handling turnout gear are perhaps the most important factors to consider in setting up a laundry. Programmable controls enable operators to utilize lower-speed wash and extract cycles for turnout gear, while having the option of higher speeds to trim drying times for other items.

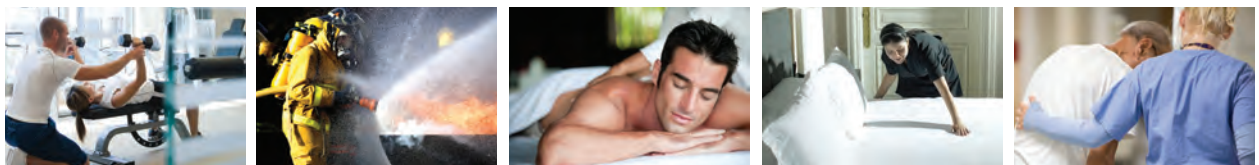
## HEALTHCARE

Hospitals and long-term care facilities need to assess their incontinence levels as this will have a significant impact on the operation. Obviously, healthcare facilities demand the highest levels of infection control. High quality equipment is a must, as well as the utmost consistency in cycles, including water temperatures that are optimal for the laundry chemicals being used.

## CORRECTIONAL FACILITIES

In this market, emphasis is on processing the greatest amounts of laundry in the shortest amount of time, safely. Generally, facilities demand the largest capacity machines. Simple, user-friendly controls will keep loads moving. Durability is a must, as is water and energy efficiency, to keep operating costs low.

# YOUR INDUSTRY.



## SPAS AND SALONS

Towels will be the major laundry component in both spas and salons. Salons often benefit from commercial manual control washers and dryers, while spas are best served by washer-extractors. These machines attain high extract speeds to remove more water from larger loads and cut drying time, improving throughput.

## ATHLETIC FACILITIES

Like spas and salons, towels will make up the majority of laundry loads at gyms and fitness centers. Thus, these industries will emphasize speed and efficiency. Managers will want higher spin speeds to remove more water and cut drying times, and, as a result, utility consumption.

## OTHER (RESTAURANT, VETERINARY CLINIC, DAIRY)

For other on-premises laundry applications (dairy, veterinary, restaurant, etc.), managers must evaluate the volume and type of linens to be processed as well as the space available. Veterinary clinics and restaurants vary in size and while one clinic may be able to get by with a commercial stack washer/dryer or one commercial washer and stack dryer/dryer, another may require a larger washer-extractor and drying tumbler. Smaller operations or fast food stores washing wipe-down rags may need small commercial manual control units versus larger businesses that may be laundering table linens and napkins and demanding larger, perhaps multiple washer-extractors and drying tumblers. Dairy applications likely will benefit from larger cabinet-style washer-extractors.



## HARDMOUNT WASHER-EXTRACTORS\*

Hardmount washer-extractors are the standard in industries such as hotels, healthcare facilities and other typically ground-floor laundries. These units are secured to the concrete floor, cost significantly less than their softmount counterparts and have a proven record of reliability with superior wash results.

Speed Queen delivers more than just clean results, with features designed to extend linen life, reduce water usage and utility costs, and maximize productivity. Our heavy-duty construction provides reliable operation and guarantees your washer-extractor will be in service for years to come, while our High G-Force extraction removes more water from each load, reducing energy costs and shortening drying times.

### FEATURES

Proprietary inverter drive technology provides smooth, reliable power – **saving you 33%** on electricity versus previous models. The sump system design **uses 11% less water** while maximizing cleaning power.

Computer-optimized frame is lighter, lasts longer, balances loads more efficiently and is designed to reduce sound and vibration levels.

Seals and bearings assembly - Two triple-lip seals and an excluder face seal for an unprecedented seven layers of water protection.

Large door design makes loading and unloading easy and fast.

Industry-leading flexible water level settings will help you save on utilities.

Large door opening for easy loading and unloading.

Available in 9 kg (20 lb), 13.6 kg (30 lb), 18 kg (40 lb), 27 kg (60 lb), 36 kg (80 lb) and 45 kg (100 lb) capacities.



### HARDMOUNT WASHER-EXTRACTOR CONTROLS

#### QUANTUM™ GOLD

Quantum™ Gold offers a total of 30 programmable cycles as well as 30 programmable water levels that enable you to adjust water use in every cycle step. PC programming and audit data retrieval save time, as do advanced diagnostics. A maximum extraction speed of 200 G-Force helps the laundry operation reduce drying time and utility consumption.

#### QUANTUM™ STANDARD

For laundry managers requiring basic management options, Quantum™ Standard comes with four cycle selections, two water levels and manual programming. It offers a maximum extraction speed of 100 G-Force.

\*Not all models are available in all markets.



## SOFTMOUNT WASHER-EXTRACTORS\*

The practical ingenuity of Speed Queen is evident in every part of the heavy-duty suspension and stainless steel construction. This is laundry for the modern world.

The powerful operation of a washer-extractor often requires that the machine be bolted to the floor. Softmount washer-extractors offer an alternative for specialized applications, such as second floors, where hardmount units aren't an option. The heavy duty suspension absorbs vibrations without the need for special foundations, and our stainless steel construction prevents the washer finish from corroding with normal use. The High G-Force extraction significantly reduces drying times and utility costs, often removing such significant moisture that items can often bypass the dryer and go directly to your flatwork finisher.



### FEATURES

High speed extraction of 350-400 G-Force results in increased throughput allowing laundry to run at optimum efficiency.

Modular bearing housing design for long life and easy service.

Strong over-sized door lock and wide set door hinges provide stability.

Reinforced side panels for increased strength and durability.

Large drain valves for increased throughput.

Stainless steel front, top and side panels, inner drum, and tub.

Large door openings for easy loading and unloading.

Available in 6.5 kg (14 lb), 8.0 kg (20 lb), 11.0 kg (25 lb), 14.0 kg (30 lb), 18.0 kg (40 lb), 24.0 kg (55 lb), 28.0 kg (65 lb) capacities.

### SOFTMOUNT WASHER-EXTRACTOR CONTROL

#### QED SELECT

QED Select Control provides a maximum of 60 programs. Extremely versatile and easy to use, the advanced computer control meets a variety of specialized needs. With more than 20 languages available, our QED Select Control is extremely flexible intuitive for bilingual operators. Users can easily follow the status of every phase of the wash cycle and modify data and parameters at any time to monitor for maximum efficiency.

\*Not all models are available in all markets.



## TUMBLE DRYERS\*

Uncomplicated. Uncompromising. Unmatched. Enjoy heavy-duty construction that will provide reliable operation for years to come.

Our single pocket tumble dryers feature a concentrated airflow pattern and sealed cylinder rims to ensure maximum air utilization and energy savings. This superior drying performance helps laundries maximize throughput to meet the daily workload without the need for added shifts or costly overtime. Our tumble dryers are designed with fewer moving parts, so that you'll face fewer maintenance problems and less wear and tear. We make it even easier with a large, easy-to-clean lint compartment and a heavy-duty door hinge designed to withstand heavy usage.

Speed Queen now offers you the choice of two tumbler ranges to best satisfy your needs. The ECO-Line range is offered on the 11.3, 13.6, 15.9, 24.9, and 34.0 kg products. The Speed Queen ECO-Line of tumblers features a lower energy input and therefore a lower energy usage compared to our Classic-Line of tumblers. This range offers a solution for end-users aiming at the lowest energy consumption rates in their industry.



### FEATURES

High-performance heater box increases energy efficiency, reduces drying times and provides a more comfortable operating environment.

A reversing cylinder helps eliminate tangles of large items such as sheets and blankets, ensuring even drying and easy removal of loads at cycle completion.

The Combustion Auto Response Equipped (C.A.R.E.) system alerts you to abnormally high temperatures in the cylinder and automatically sprays water in the cylinder to cool it down if necessary.

The 24.5 kg (55 lb) capacity model also fits through a 914 mm (36 in) door opening and is 251 mm (1 ft) shorter than our 22.6 kg (50 lb) unit, making it a great replacement option for laundries short on space.

Available Over-dry Prevention Technology eliminates the costs associated with over-drying.

Available in 11.3 kg (25 lb), 13.6 kg (30 lb), 15.9 kg (35 lb), 23 kg (50 lb), 24.9 kg (55 lb), 34 kg (75 lb), 54.4 kg (120 lb), 77.1 kg (170 lb) and 90.7 kg (200 lb) capacities.

### TUMBLE DRYER CONTROLS

#### QUANTUM™ GOLD

Quantum™ Gold offers the flexibility of 30 programmable cycles combined with the accuracy of our moisture sensing technology that prevents over drying, saving time and energy.

#### DUAL DIGITAL

With features that include one touch cycle repeat, automatic extended tumble and a large digital countdown display, it's simple to set your drying time, temperature and cool down.

\*Not all models are available in all markets.





## STACK TUMBLE DRYERS\*

Get twice the capacity of a standard dryer in the floor space of a single pocket tumble dryer. Plus, you'll still only need one set of gas, electric and exhaust hook ups, simplifying your installation.

Our line of stack tumble dryers provides double the capacity of Speed Queen single pocket tumble dryers while using only half the floor space.

The T45 boasts 40.8 kg (90 lb) of rated capacity and stands as one of the most efficient tumble dryers ever built. Its two sizable cylinders, combined with its efficiency and small footprint, make it an excellent alternative to single 22.6 kg (50 lb) or 34 kg (75 lb) units.

Speed Queen now offers you the choice of two tumbler ranges to best satisfy your needs. The Speed Queen ECO-Line of tumblers features a lower energy input and therefore a lower energy usage compared to our Classic-Line of tumblers. This range offers a solution for end-users aiming at the lowest energy consumption rates in their industry.



### FEATURES

Large, easy-to-clean lint compartment.

Fewer moving parts mean fewer maintenance problems and less wear.

High performance heater box increases energy efficiency, reduces drying times and provides a more comfortable operating environment.

Axial airflow pattern with sealed cylinder rims delivers the fastest and most efficient drying results in the industry.

Available Over-dry Prevention Technology eliminates the costs associated with over-drying.

Available in 13.6 kg (30 lb) and 20.4 kg (45 lb) capacities.

### STACK TUMBLE DRYER CONTROLS

#### QUANTUM™ GOLD

Quantum™ Gold offers the flexibility of 30 programmable cycles combined with the accuracy of our moisture sensing technology that prevents over drying, saving time and energy.

#### DUAL DIGITAL

With features that include one-touch cycle repeat, automatic extended tumble and a large digital countdown display, it's simple to set your drying time, temperature and cool down.

\*Not all models are available in all markets.



## FRONT LOAD WASHERS\*

Energy Efficient. Cost Efficient. Everything you need to reduce operating costs, from our low water usage to our high-speed extraction. Our front load washers are highly efficient, reducing operating costs with low water usage, using as little as 44.3 liters (11.7 gallons) per cycle, a savings of more than 40 percent compared to some commercial top load washers. Fast cycle times get the job done quickly, while the double load washtub provides lots of room for larger loads.

### FEATURES

Improved suspension with new out-of-balance logic manages and redistributes unbalanced loads for uninterrupted wash cycles.

High spin speed up to 440 G-Force removes more water from clothes, speeding up drying cycles and lowering dryer energy usage.

A pump drain allows our front load washers to be installed adjacent to or replace top load washers with no special plumbing (A gravity drain option is also available).

Available in 9.5 kg (21.5 lb) capacity.



## TOP LOAD WASHERS\*

As timeless as they are reliable, these washers are built from the ground up from heavy-duty components that are guaranteed to stand the test of time. Compliant with U.S. and many international water and energy standards for commercial washers, your laundry will realize significant savings in water and energy costs.

### FEATURES

Designed for durability and ease of use with push to start switch and reinforced control knobs.

Extra large capacity stainless steel tubs keep clothes looking their best.

Advanced suspension system eliminates the possibility of an unbalanced load.

Commercial quality transmission offers highest quality and durability.

Multi-cycle controls provide washing options to fit your laundry needs.

Available in 7.3 kg (16 lb) capacity.



## FRONT LOAD AND TOP LOAD WASHER CONTROLS

---

### ELECTRONIC CONTROL

The Electronic Control keeps users informed throughout the wash process with cycle status lights and a digital cycle countdown. Users also have the flexibility to control temperature, load type, and soil levels, as well as the option of a pre-wash and/or additional rinse to achieve high levels of efficiency.



## SINGLE DRYERS\*

With a large load capacity in a compact frame, each one of our single dryers is all business, all the time.

With a large, easy-to-clean lint compartment and a reversible door to accommodate your laundry layout, Speed Queen single dryers are designed to suit your laundry's specific needs. The 1913.8 sq. cm (2.06 sq. ft.) door opening is the largest in the industry, providing easy loading and unloading.

### FEATURES

Durable galvanized steel cylinder with an extra-large 198 litres (7 cu. ft.) of volume.

Efficient dryer heating with 21.09MJ (gas models) and 4,000 Watts (electric models).

Available in 8 kg (18 lb) capacity cylinder.



### CONTROLS

#### ELECTRONIC CONTROL

The Electronic Control keeps users informed throughout the drying process with cycle status lights and a digital cycle countdown. Automatic (moisture sensing) cycles come standard to prevent over-drying of your linens.



## STACK WASHER/DRYER\*

Get the complete package in a single unit, combining our efficient dryers with the powerful performance of our industry-leading front load washers.

Our line of stack washer/dryers are designed as vertical combinations that provide all of the power of Speed Queen washers and dryers while occupying only half of the floor space of a conventional washer and dryer setup. Plus, these stacked units allow you to utilize the same connections and hook-ups required by a standard washer and dryer, so you won't have to make changes to your installation.

### FEATURES

Improved suspension with new out-of-balance logic manages and redistributes unbalanced loads for uninterrupted wash cycles.

Water use is trimmed to 44.3 liters (11.7 gallons) per cycle to reduce operating costs.

Available in 9.5 kg (21.5 lb) washer capacity and 8.0 kg (18 lb) dryer capacity.



### STACK WASHER/DRYER CONTROL

#### ELECTRONIC CONTROL

The Electronic Control keeps users informed throughout the wash process with cycle status lights and a digital cycle countdown. Users also have the flexibility to control temperature, spin speeds, and soil levels, as well as the option of a pre-wash and/or additional rinse to achieve high levels of efficiency. Automatic (moisture sensing) cycles come standard to prevent over-drying of your linens.

\*Not all models are available in all markets.



## FLATWORK FINISHERS\*

When “good enough” isn’t good enough, our cylinder or chest-heated ironers are ready to get the job done. Top-notch performance that includes safety features to match.

With a wide range of electric, gas or steam models, these machines are guaranteed to get the job done quickly, efficiently and effectively. On-premises laundries at hotels, restaurants and other sites who rely on the highest quality results will benefit from excellent final linen products and reduced operating costs.



### FEATURES

#### IRI SERIES CYLINDER HEATED IRONERS

Suitable for smaller applications due to its reduced dimensions and user-friendly operation

Aluminum feeding board provides a longer lifespan, while finger guard protection and emergency stop button provide safety for users

Available in 200 mm (8"), 250 mm (10") and 300 mm (12") roller diameters and lengths that range from 1000 mm (39") to 2000 mm (79")

#### FCS SERIES CYLINDER HEATED IRONERS

Easy to use, compact and high quality constructed product for your laundry operation

Easy enough to be operated by a single user, while special steel construction provides efficient heat transfer and high quality construction allows for a longer lifespan

Available in 320 mm (13") roller diameter and finishing widths that range from 1664 mm (66") to 2080 mm (82")

### FLATWORK FINISHER CONTROLS

#### IRI MICROPROCESSOR CONTROL

Provides electronic thermoregulation offering better temperature distribution and reduced energy consumption.

#### FCS MICROPROCESSOR CONTROL

User-friendly with up to 20 available programs, programmable speeds and option to change the speed during operation.

\*Not all models are available in all markets.



[www.speedqueen.com/intl](http://www.speedqueen.com/intl)



Vic, Tas, SA & NT  
Speed Queen Equipment Sales Pty. Ltd.  
26 Theobald Street, Thornbury Vic 3071  
P: 03 9495 1300  
E: [sales@speedqueensales.com.au](mailto:sales@speedqueensales.com.au)  
W: [www.speedqueensales.com.au](http://www.speedqueensales.com.au)



Speed Queen® is a division of Alliance Laundry Systems. Alliance is the world's leading manufacturer of commercial laundry equipment. Learn more at [alliancelaundry.com](http://alliancelaundry.com)  
Speed Queen® and Quantum™ are trademarks of Alliance Laundry Systems LLC

AI14-0004  
©2014 Alliance Laundry Systems LLC